



**LORING PARK**





## LORING PARK

The site is 2.5 acres of undeveloped city-owned and managed park land. The Loring Park site is located on a hill that provides a good view of the Santa Ana River and the adjacent Camp Evans area from the highest point of the site. Loring Park is located within a historic residential neighborhood and can be developed to link the residential neighborhood to the Camp Evans area and the Santa Ana River Trail. The sparse vegetation is generally non-native ornamental plants and trees such as California Pepper.

The intent for this site is to provide a low use, high security development that capitalizes on the views, cultural heritage, geological features, and historical use loosely as a tree arboretum. Possible addition of a par course and jogging loop is also being considered.

## Opportunities

- 2.5 acres of undeveloped City owned park land.
- Historic neighborhood between Fairmount Park (Camp Evans) and Mt. Rubidoux.
- Scenic views of the Santa Ana River and Mt. Rubidoux.

## Park improvement ideas

- Walking trails
- Provide a formal connection between Loring Park and Fairmount Park's Camp Evans area (stairs probably needed)
- Provide a connection to the Santa Ana River Trail. Loring would serve as a destination for SART users
- Vista Points
- Landscaping and irrigation overhaul –traditional arboretum planting with groupings of trees along the path, minimal shrubs
- Natural looking parkour / exercise stations
- Public art



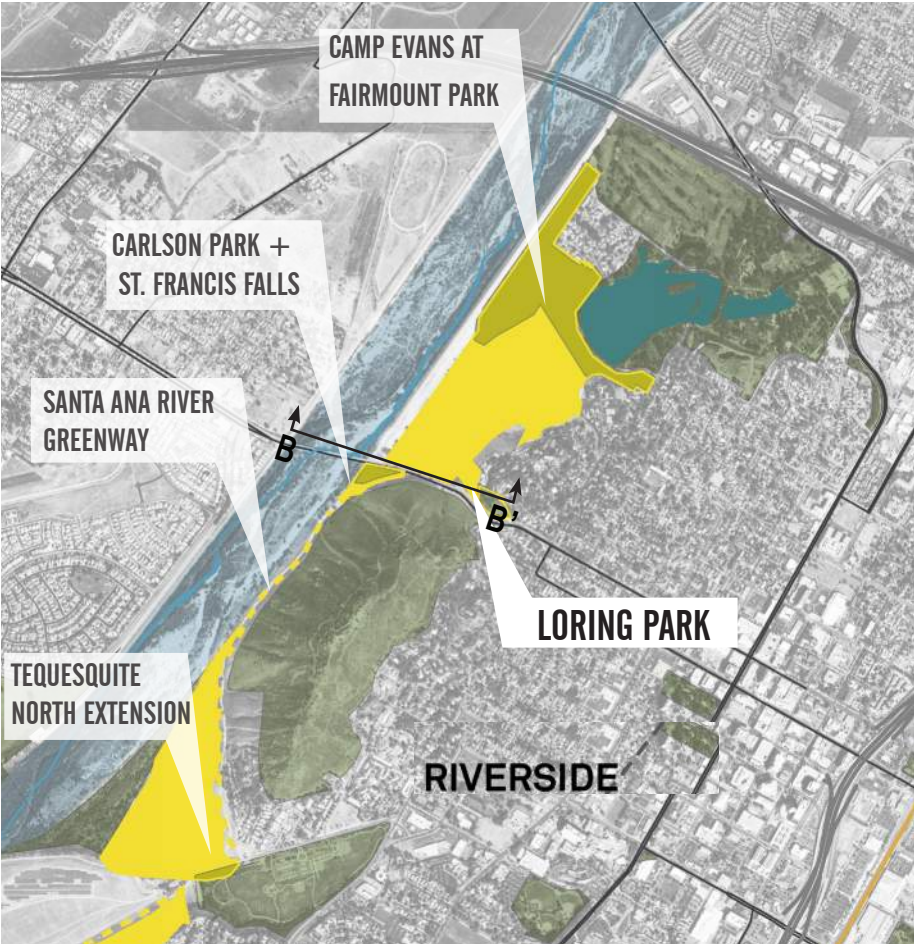
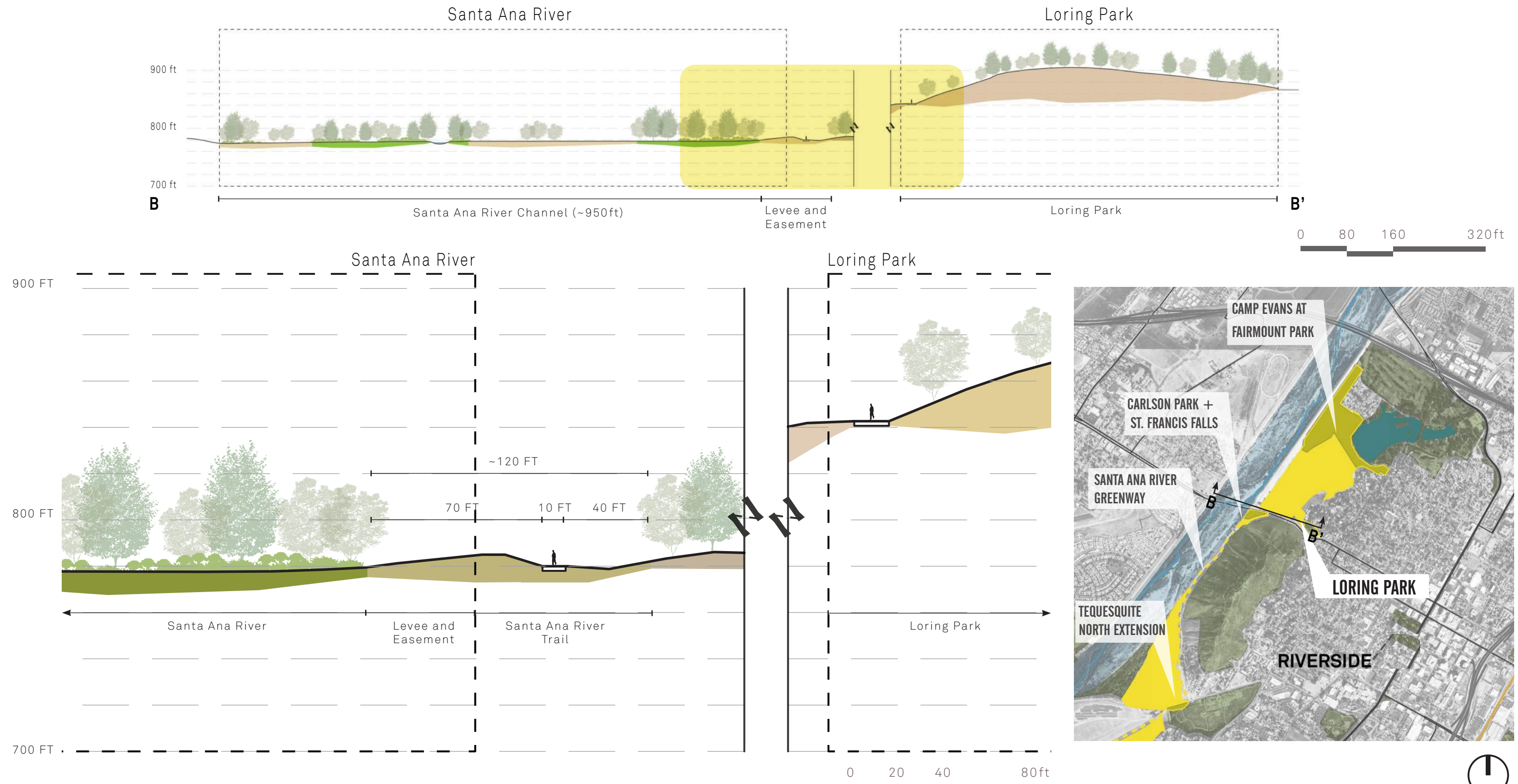
Loring Park is characterized by steep terrain, great views to the surrounding landscape, and a close relationship to residential neighborhoods



SITE CONTEXT



EXISTING SECTION THROUGH PARK AND RIVER





OPPORTUNITIES AND CONSTRAINTS

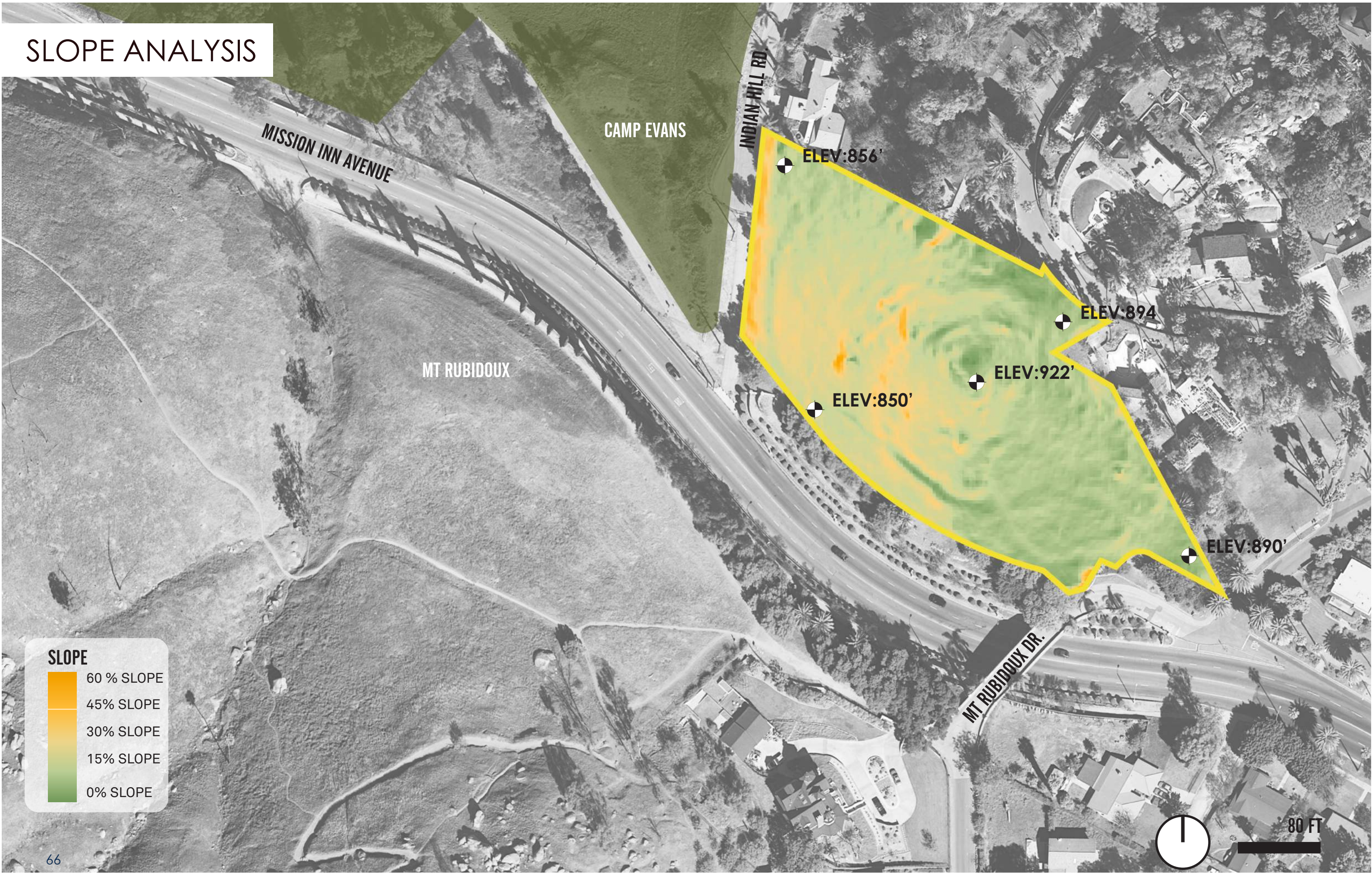


SITE DIMENSIONS





SLOPE ANALYSIS



TREE INVENTORY





