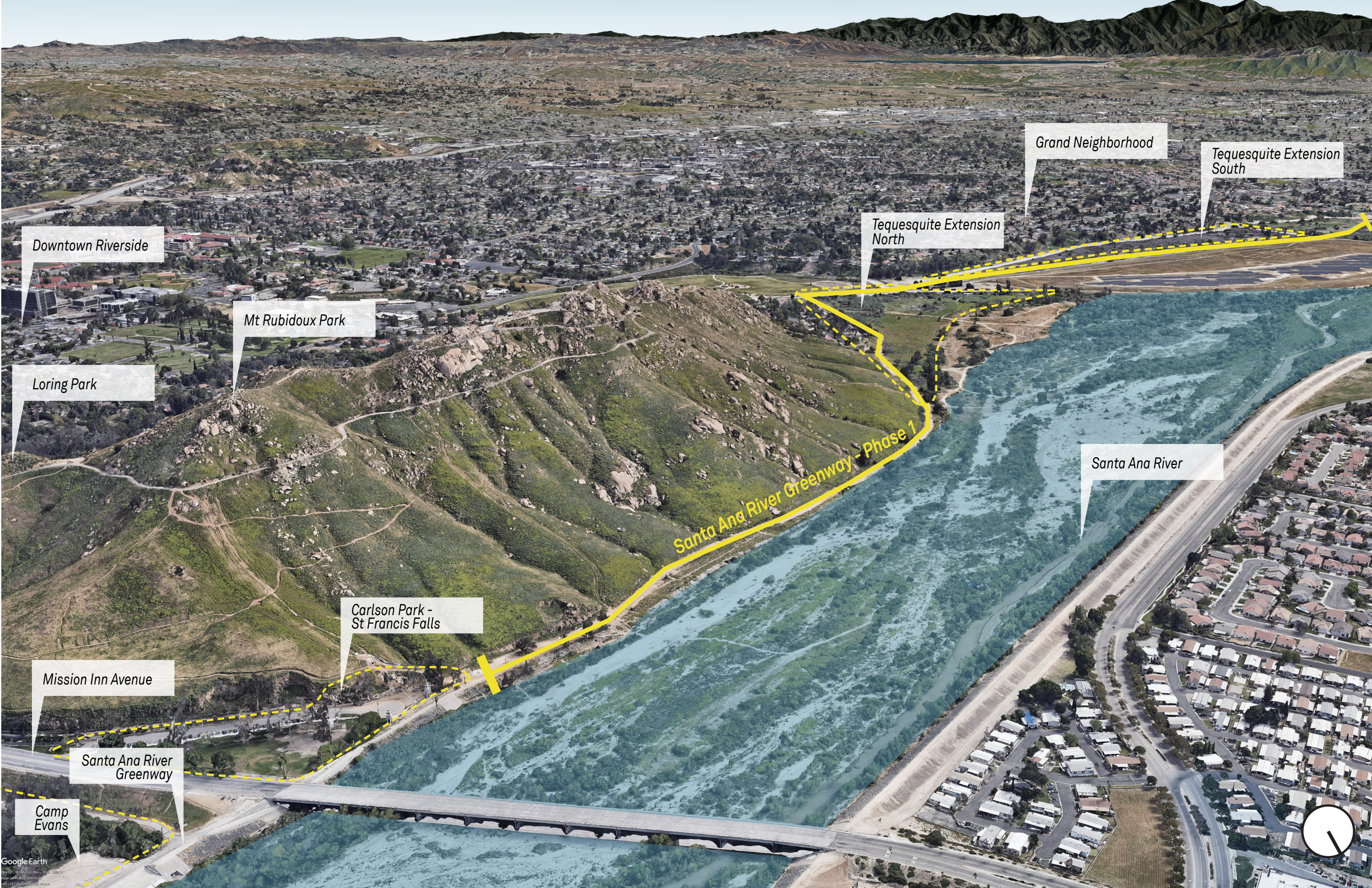




**SANTA ANA RIVER PARKWAY DEVELOPMENT**





Downtown Riverside

Mt Rubidoux Park

Loring Park

Tequesquite Extension North

Grand Neighborhood

Tequesquite Extension South

Santa Ana River Greenway - Phase 1

Santa Ana River

Carlson Park - St Francis Falls

Mission Inn Avenue

Santa Ana River Greenway

Camp Evans





## SANTA ANA GREENWAY - PHASE 1

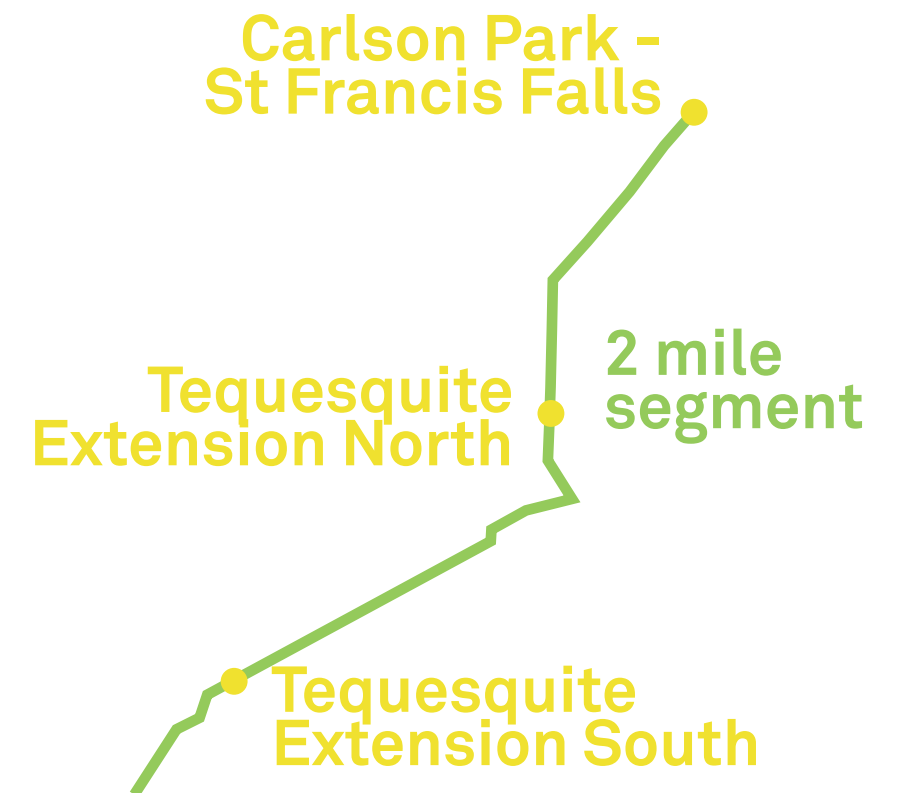
This segment of the trail runs from the back of Carlson Park, along the Tequesquite Extension North site, past Ryan Bonaminio Park, the 4-acre private parcel proposed for acquisition, and finally to the Tequesquite Extension South site. The project runs along city-owned undeveloped park and open space land and public right of way. The corridor to be improved has sparse vegetation, generally weedy plants and non-native habitat.

### Opportunities

- Approximately 2 miles parallel to existing paved Class 1 Santa Ana River Trail
- Connects Mt. Rubidoux, Ryan Bonaminio Parks, and Tequesquite Extension South
- Street access available from Rubidoux Ave

### Park improvement ideas

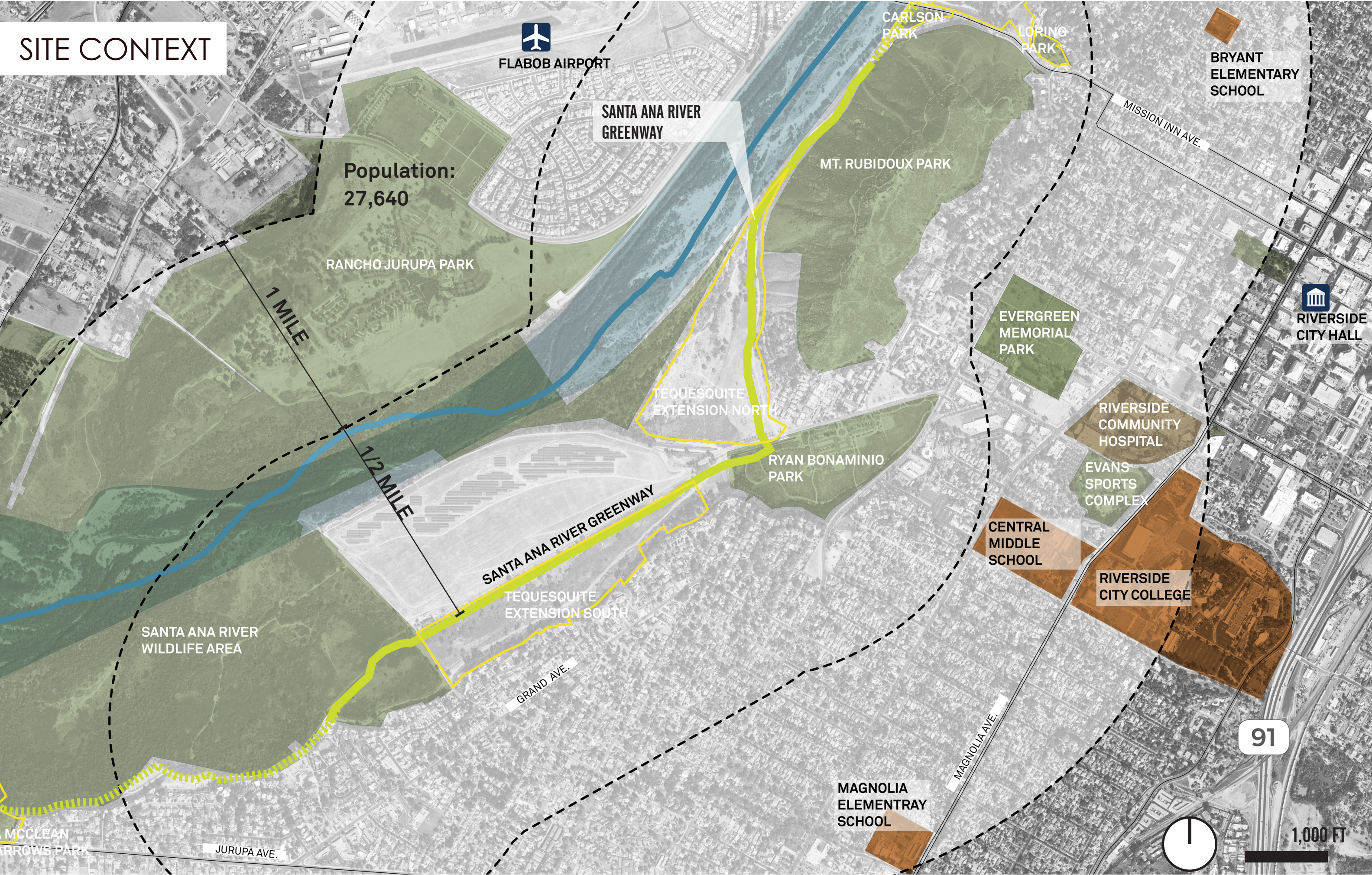
- Add a decomposed granite path parallel to the existing paved Class 1 Santa Ana River Trail to separate slower recreational users from higher speed users (cyclists, skaters, etc).
- Landscaping, irrigation, lighting, signage, emergency phones, and other trail user support amenities to create a shady and aesthetically inviting space.



The Santa Ana Greenway Phase 1 is characterized by an existing asphalt path in sandy conditions with minimal vegetation or invasive species along it.

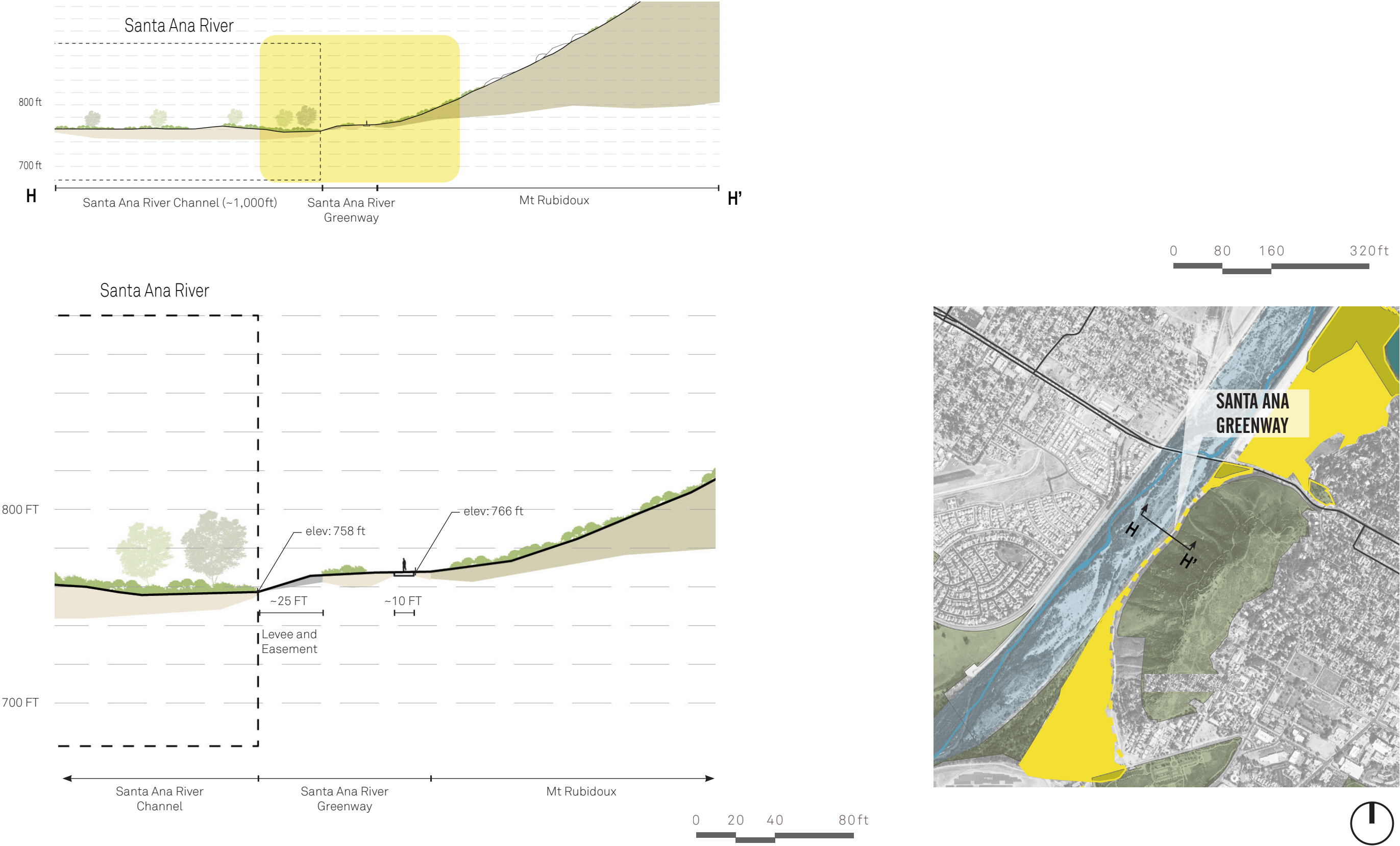


SITE CONTEXT



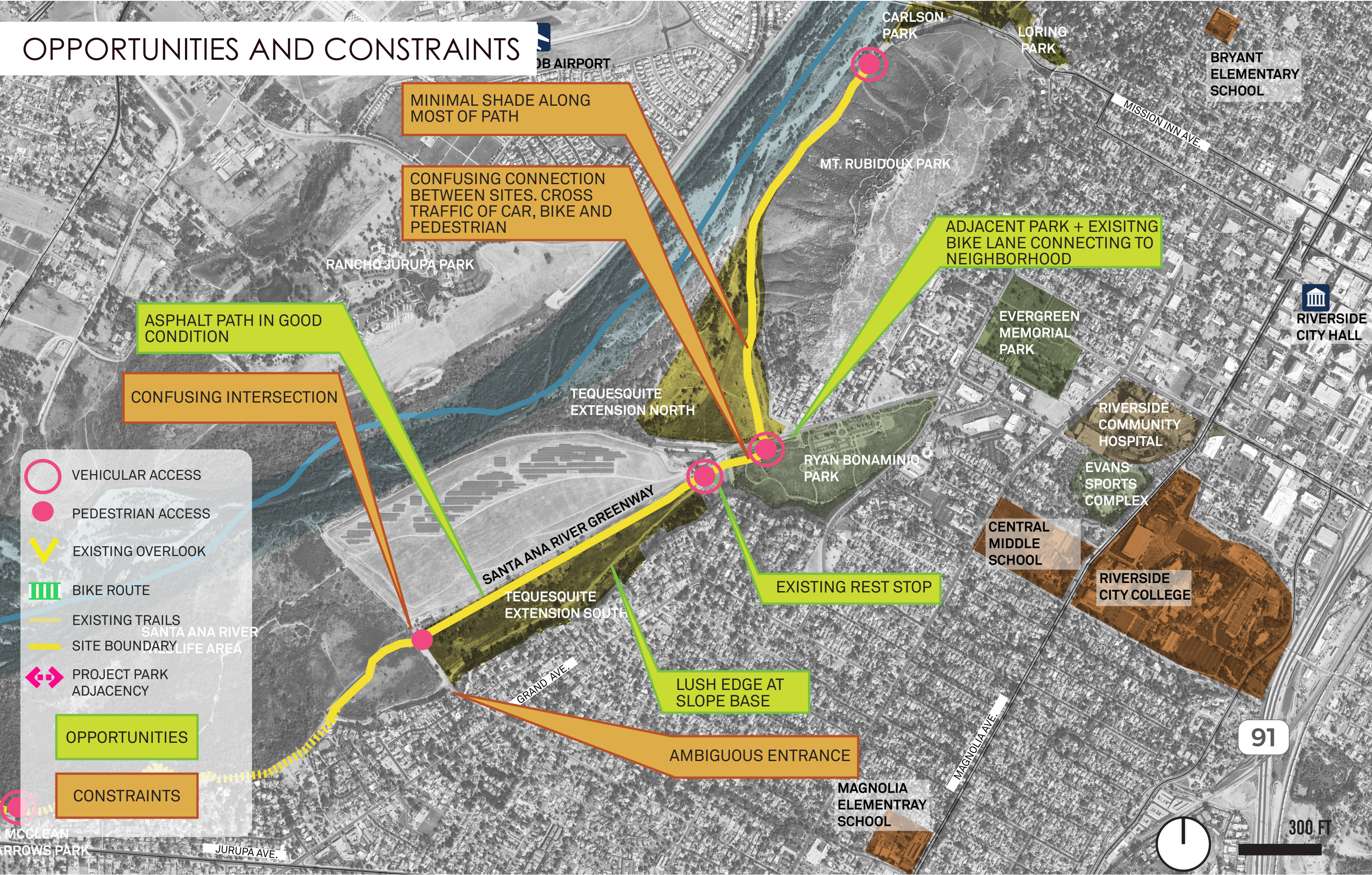


# EXISTING SECTION THROUGH PARK AND RIVER



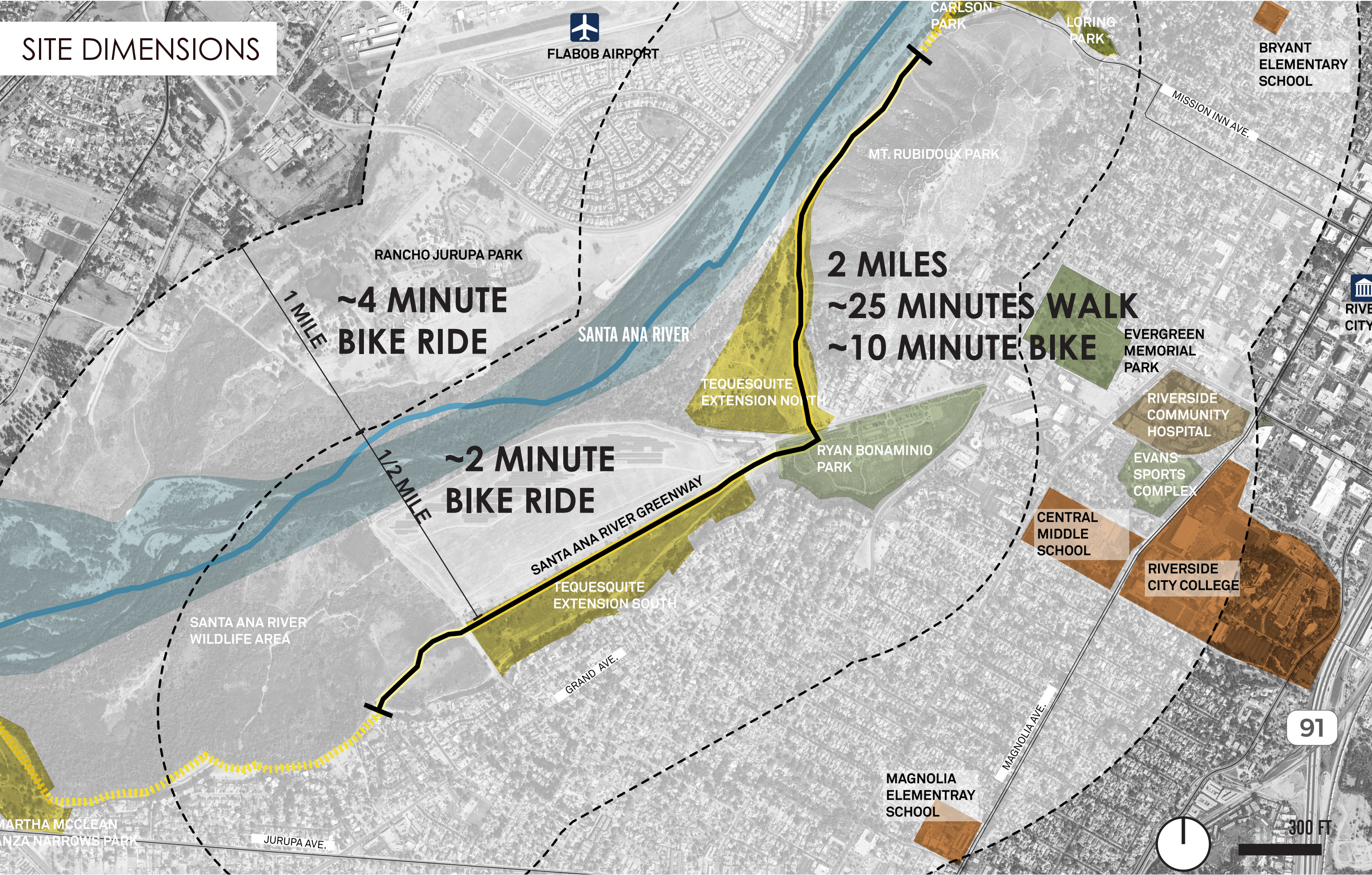


# OPPORTUNITIES AND CONSTRAINTS



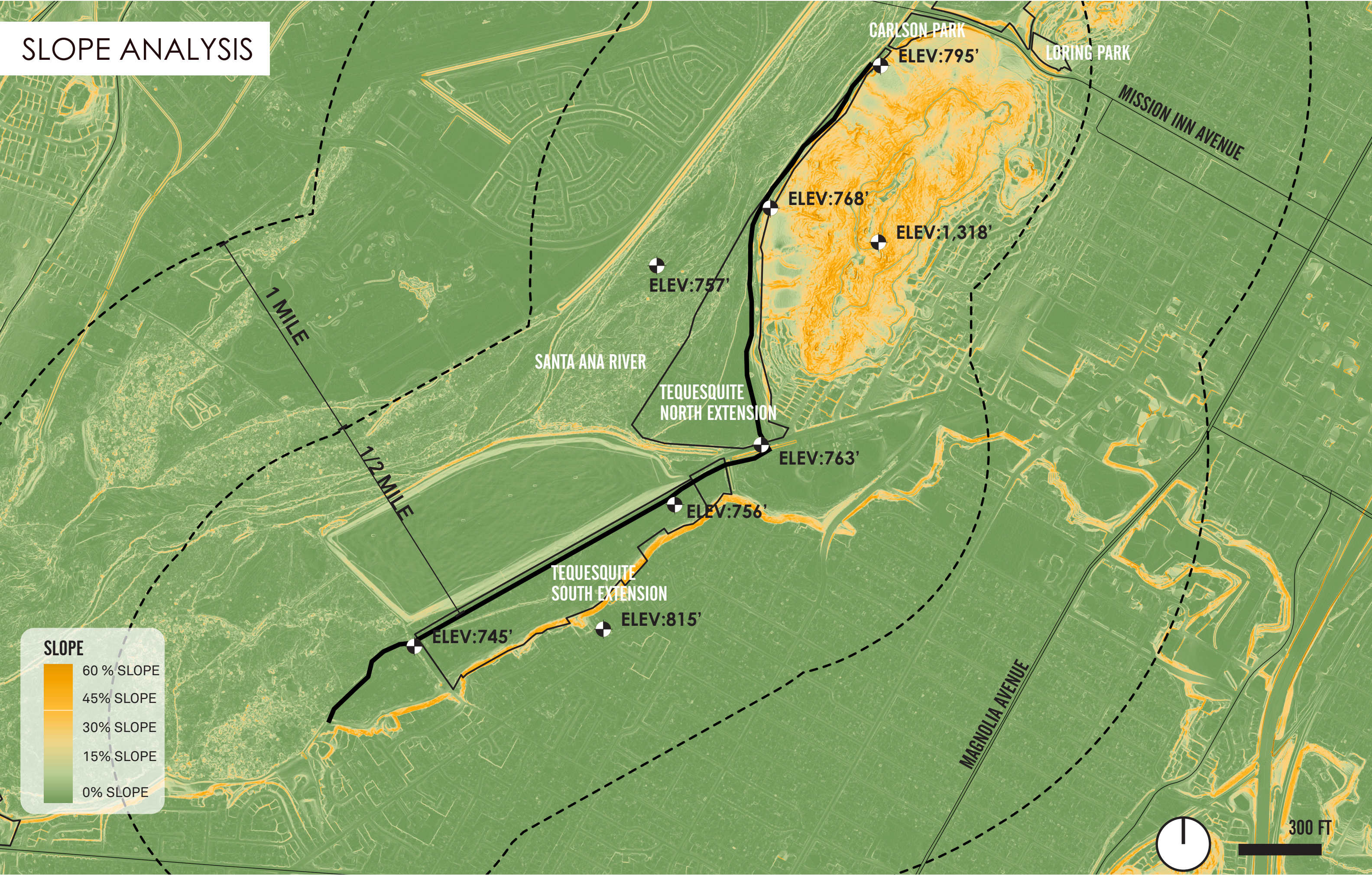


SITE DIMENSIONS





# SLOPE ANALYSIS





# TREE INVENTORY









